



This section titled “**Rates - “Vital Stats”**” is rather unique. For a subject as topical in the public domain at “rates,” there is surprisingly little really useful analysis.

With data drawn not just from Council sources, principally the tax payer and rate payer groups hot topics such as headlines screaming, “Typical Council” - rates go through the roof.

This section can provide an authoritative response.

The five measures of this section are just a sample of public domain rates reporting, and can be expanded if further reliable information was to come to hand.

SECTION 6

RATES

- Rates as a Proportional Revenue

- “Vital Stats”





SECTION 6:

RATES - "Vital Stats" (6 Reports)

List of Contents: "Measures"	No. of Reports	Pg. No.
1. All Elements		
- Rates as a Proportion of Total Revenue	2	3
2. Graph - Full		
- Rates as a Proportion of Total Revenue	1	7
3. Graph - Upper		
- Rates Magnified View as a Proportion of Total Revenue	1	9
4. Ranked Table		
- Rates as a Proportion of Total Revenue	1	11
5. Stats Table		
- Rates as a Proportion of Total Revenue	1	14



CPR CONSULTANTS

Comparative Performance Resources



...a lifesaver for busy council policy people

MEASURE NO: 1

ALL ELEMENTS - RATES AS A PROPORTION OF TOTAL REVENUE



Rates as a Proportion of Total Revenue (Including Auckland)												
Type	Council	2014	% Change	2015	% Change	2016	% Change	2017	% Change	2018	5 Year Average	2018 % Change from Average
C	Hutt City Council	68%	-0.4%	67%	+1.4%	68%	-0.7%	68%	-0.4%	67%	68%	-0.3%
C	Invercargill City Council	60%	+1.7%	61%	-1.4%	60%	-1.7%	59%	-1.9%	58%	60%	-2.8%
C	Napier City Council	56%	-1.8%	55%	+0.2%	55%	-7.1%	51%	+8.1%	56%	55%	+1.5%
C	Palmerston North City Council	74%	+0.2%	74%	+2.0%	75%	-1.6%	74%	-1.2%	73%	74%	-1.1%
C	Porirua City Council	74%	+0.5%	75%	+0.1%	75%	-1.6%	73%	+0.8%	74%	74%	-0.2%
C	Upper Hutt City Council	77%	+1.1%	78%	+4.4%	81%	-4.2%	78%	+5.0%	81%	79%	+3.3%
City Average		68%	+0.3%	68%	+1.3%	69%	-2.7%	67%	+1.6%	68%	68%	+0.2%
M	Christchurch City Council	56%	+4.5%	58%	-19.2%	47%	+5.6%	50%	+1.8%	51%	52%	-3.2%
M	Dunedin City Council	58%	+2.4%	60%	+7.0%	64%	-1.6%	63%	-3.3%	61%	61%	-0.5%
M	Hamilton City Council	71%	-5.1%	67%	+4.7%	70%	-1.9%	69%	+0.6%	70%	69%	+0.1%
M	Tauranga City Council	62%	+3.0%	64%	+0.8%	65%	+0.5%	65%	-0.2%	65%	64%	+1.0%
M	Wellington City Council	61%	-3.4%	59%	+2.4%	60%	-3.2%	58%	+2.1%	59%	59%	-0.1%
Metropolitan Average		62%	+0.0%	62%	-0.6%	61%	-0.4%	61%	+0.1%	61%	61%	-0.4%
P	Ashburton District Council	57%	+4.8%	59%	-0.2%	59%	-6.3%	55%	+12.2%	62%	59%	+6.3%
P	Far North District Council	71%	-3.7%	69%	+9.9%	76%	-2.9%	73%	+1.7%	75%	73%	+2.6%
P	Hastings District Council	71%	+0.1%	71%	+0.1%	71%	-4.8%	67%	+2.9%	69%	70%	-0.6%
P	Horowhenua District Council	70%	+4.8%	73%	-0.5%	73%	+0.2%	73%	+4.8%	77%	73%	+4.6%
P	Kaipara District Council	67%	-1.7%	66%	-10.5%	59%	+15.1%	68%	-2.6%	66%	65%	+1.4%
P	Kapiti Coast District Council	81%	+1.8%	82%	+1.1%	83%	-1.6%	82%	-0.5%	81%	82%	-0.6%
P	Manawatu District Council	68%	+0.6%	69%	+3.2%	71%	+0.3%	71%	-0.6%	71%	70%	+1.1%
P	Masterton District Council	72%	-0.1%	72%	-0.7%	71%	+0.9%	72%	-2.4%	70%	72%	-1.6%
P	Matamata-Piako District Council	72%	+0.9%	73%	-0.1%	72%	+4.8%	76%	+0.3%	76%	74%	+3.2%
P	New Plymouth District Council	62%	+0.3%	62%	+0.7%	63%	-17.2%	52%	+23.4%	64%	61%	+5.7%
P	Queenstown Lakes District Council	67%	-7.1%	62%	-2.4%	60%	-7.8%	56%	-0.4%	55%	60%	-7.6%
P	Rotorua District Council	69%	+2.1%	71%	+0.5%	71%	+4.4%	74%	+6.3%	79%	73%	+8.3%
P	Selwyn District Council	56%	-3.6%	54%	+2.6%	55%	+7.2%	59%	+0.2%	59%	57%	+4.6%
P	South Taranaki District Council	62%	-1.1%	62%	-2.0%	60%	-4.8%	57%	-6.2%	54%	59%	-8.9%
P	South Waikato District Council	76%	+2.8%	78%	-5.4%	74%	+3.2%	76%	-5.6%	72%	75%	-4.4%
P	Southland District Council	70%	+1.3%	70%	-2.1%	69%	-2.9%	67%	-1.2%	66%	68%	-3.3%
P	Taupo District Council	77%	-2.1%	75%	+1.4%	76%	-0.2%	76%	-4.5%	72%	75%	-3.6%
P	Thames-Coromandel District Council	81%	-0.3%	81%	-3.9%	78%	-2.4%	76%	+0.1%	76%	79%	-3.1%
P	Timaru District Council	57%	-1.6%	56%	+1.0%	57%	-0.3%	57%	-1.1%	56%	57%	-1.0%
P	Waikato District Council	76%	+1.2%	77%	+0.8%	77%	-1.3%	76%	-5.5%	72%	75%	-4.7%
P	Waimakariri District Council	64%	+5.6%	68%	-0.7%	67%	+4.6%	70%	+2.3%	72%	68%	+5.4%
P	Waipa District Council	72%	-0.4%	71%	-2.5%	70%	+4.4%	73%	-1.8%	71%	71%	+0.0%
P	Waitaki District Council	69%	+2.6%	70%	-2.8%	69%	+4.2%	71%	-5.6%	67%	69%	-2.7%
P	Western Bay of Plenty District Council	79%	+1.8%	81%	-2.4%	79%	+0.3%	79%	+2.1%	80%	80%	+1.2%
P	Whakatane District Council	69%	-1.0%	68%	+8.0%	73%	-12.3%	64%	+4.5%	67%	68%	-1.5%
P	Whanganui District Council	69%	+2.6%	71%	+0.3%	71%	+6.5%	76%	-3.2%	73%	72%	+1.8%
P	Whangarei District Council	61%	-8.5%	55%	+12.1%	62%	-0.9%	62%	+3.6%	64%	61%	+5.0%
Provincial Average		69%	+0.1%	69%	+0.1%	69%	-0.4%	69%	+0.5%	69%	69%	+0.2%



Rates as a Proportion of Total Revenue (Including Auckland)												
Type	Council	2014	% Change	2015	% Change	2016	% Change	2017	% Change	2018	5 Year Average	2018 % Change from Average
R	Buller District Council	61%	-1.8%	60%	+5.9%	63%	-6.7%	59%	+8.6%	64%	62%	+4.4%
R	Carterton District Council	67%	+2.9%	69%	+8.9%	75%	+1.0%	76%	+0.6%	76%	72%	+5.1%
R	Central Hawkes Bay District Council	62%	+20.7%	75%	-0.4%	75%	-0.9%	74%	-3.3%	72%	72%	+0.2%
R	Central Otago District Council	75%	+1.1%	76%	-0.9%	75%	-6.8%	70%	+0.2%	70%	73%	-4.2%
R	Chatham Islands Council	10%	+0.4%	10%	-5.0%	9%	-10.0%	8%	+11.5%	9%	9%	+0.3%
R	Clutha District Council	77%	-0.4%	77%	-0.9%	76%	-7.9%	70%	+7.4%	75%	75%	+0.3%
R	Gore District Council	75%	-1.2%	74%	+0.9%	75%	+0.0%	75%	-0.5%	74%	75%	-0.3%
R	Grey District Council	62%	+7.3%	66%	+1.5%	67%	+3.0%	69%	+5.4%	73%	67%	+8.1%
R	Hauraki District Council	85%	-6.1%	79%	+7.2%	85%	-3.9%	82%	-2.3%	80%	82%	-2.7%
R	Hurunui District Council	40%	+19.4%	48%	-8.5%	44%	-38.7%	27%	+4.3%	28%	37%	-25.0%
R	Kaikoura District Council	65%	+1.4%	66%	+1.6%	67%	-38.9%	41%	+6.0%	44%	57%	-23.2%
R	Kawerau District Council	82%	+1.2%	83%	+0.6%	83%	-2.6%	81%	+1.3%	82%	82%	-0.1%
R	Mackenzie District Council	59%	+14.6%	67%	-26.3%	49%	+7.1%	53%	+11.9%	59%	57%	+3.1%
R	Opotiki District Council	75%	-11.9%	66%	+19.9%	79%	-6.5%	74%	-1.5%	73%	73%	-0.7%
R	Otorohanga District Council	73%	-0.0%	73%	-4.3%	70%	+1.1%	71%	-0.9%	70%	71%	-1.8%
R	Rangitikei District Council	70%	+1.4%	71%	-9.7%	64%	-1.2%	63%	+1.3%	64%	66%	-3.6%
R	Ruapehu District Council	68%	+7.7%	73%	-10.8%	65%	+7.0%	70%	-0.8%	69%	69%	+0.2%
R	South Wairarapa District Council	71%	+3.4%	74%	-1.6%	73%	+0.6%	73%	-3.3%	71%	72%	-2.3%
R	Stratford District Council	72%	-0.9%	71%	-19.3%	57%	+15.6%	66%	-2.5%	65%	66%	-2.4%
R	Tararua District Council	68%	-3.8%	66%	+1.9%	67%	+4.7%	70%	-21.4%	55%	65%	-15.5%
R	Waimate District Council	75%	+4.6%	78%	-15.4%	66%	+1.8%	67%	-1.5%	66%	70%	-6.0%
R	Wairoa District Council	55%	-3.0%	54%	+23.7%	66%	-6.7%	62%	-3.2%	60%	59%	+0.8%
R	Waitomo District Council	68%	-1.6%	67%	+2.5%	68%	+4.8%	72%	-3.4%	69%	69%	+0.7%
R	Westland District Council	41%	+63.0%	67%	-21.4%	53%	+13.4%	60%	+0.0%	60%	56%	+6.6%
	Rural Average	65%	+3.5%	67%	-2.2%	66%	-2.5%	64%	-0.3%	64%	65%	-2.0%
U	Auckland Council	71%	+0.2%	71%	+4.8%	74%	+1.5%	75%	-1.1%	74%	73%	+1.9%
U	Gisborne District Council	68%	+0.8%	68%	+1.4%	69%	-3.5%	67%	+2.5%	69%	68%	+0.5%
U	Marlborough District Council	57%	+0.9%	58%	-1.7%	57%	+2.9%	58%	-0.6%	58%	58%	+0.8%
U	Nelson City Council	66%	+2.3%	68%	-7.6%	63%	-4.0%	60%	-2.0%	59%	63%	-6.7%
U	Tasman District Council	60%	+5.0%	63%	-0.8%	62%	-8.5%	57%	-3.5%	55%	59%	-7.4%
	Unitary Average	64%	+1.8%	66%	-0.7%	65%	-2.3%	64%	-0.9%	63%	64%	-2.0%
	Grand Total (Sector) Average	66%	+1.4%	67%	-0.7%	67%	-1.5%	66%	+0.2%	66%	67%	-0.7%

All figures taken from StatsNZ



Rates as a Proportion of Total Revenue (Including Auckland)								
Year	New Zealand Average	Sector Max	Sector Min	City Council Average	Metropolitan Council Average	Provincial Council Average	Rural Council Average	Unitary Council Average
2014	66%	85%	10%	68%	62%	69%	65%	64%
2015	67%	83%	10%	68%	62%	69%	67%	66%
2016	67%	85%	9%	69%	61%	69%	66%	65%
2017	66%	82%	8%	67%	61%	69%	64%	64%
2018	66%	82%	9%	68%	61%	69%	64%	63%

All figures taken from StatsNZ



CPR CONSULTANTS

Comparative Performance Resources



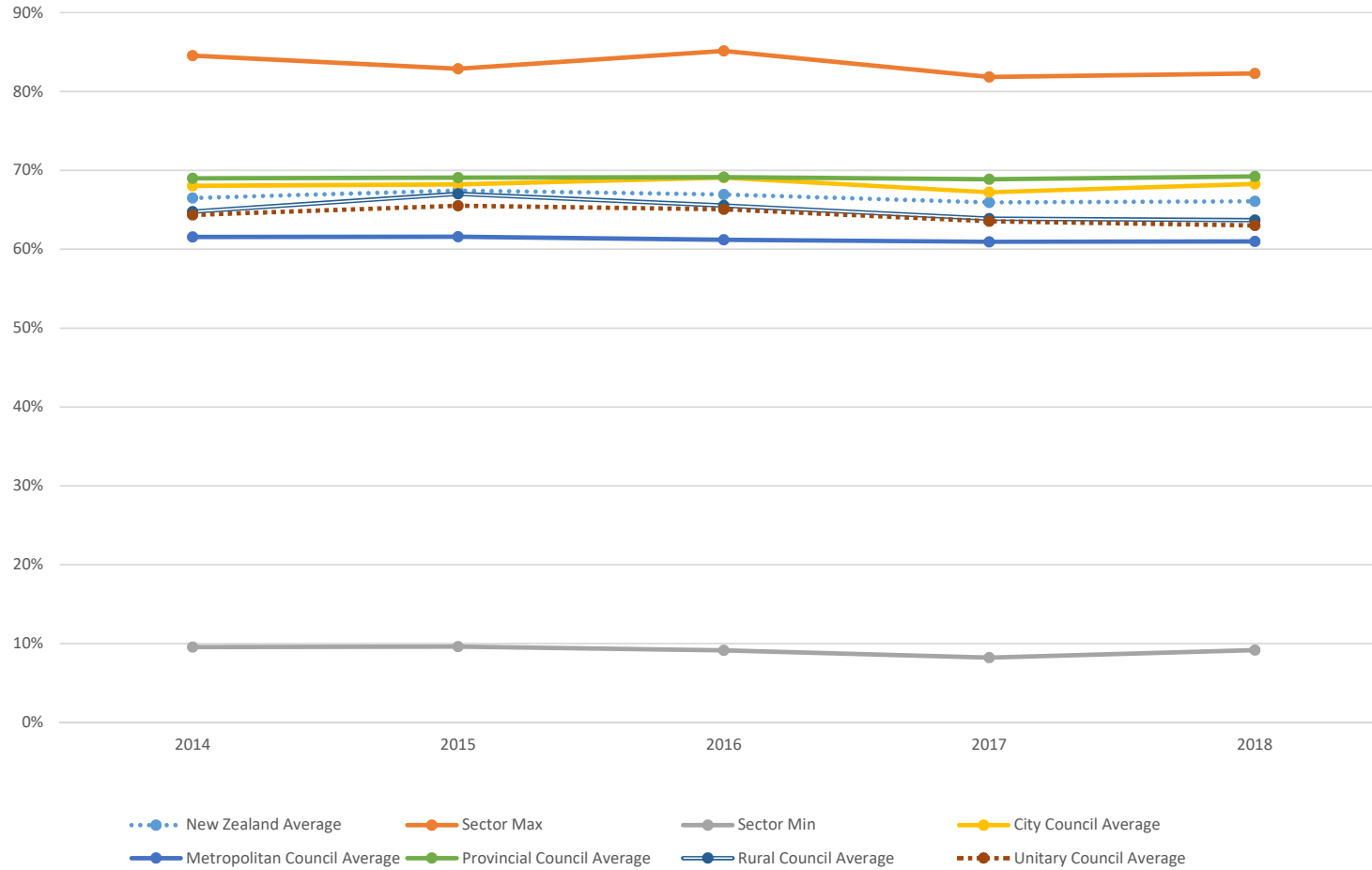
...a lifesaver for busy council policy people

MEASURE NO: 2

GRAPH - FULL - RATES AS A PROPORTION OF TOTAL REVENUE



Rates as a Proportion of Total Revenue (Including Auckland)



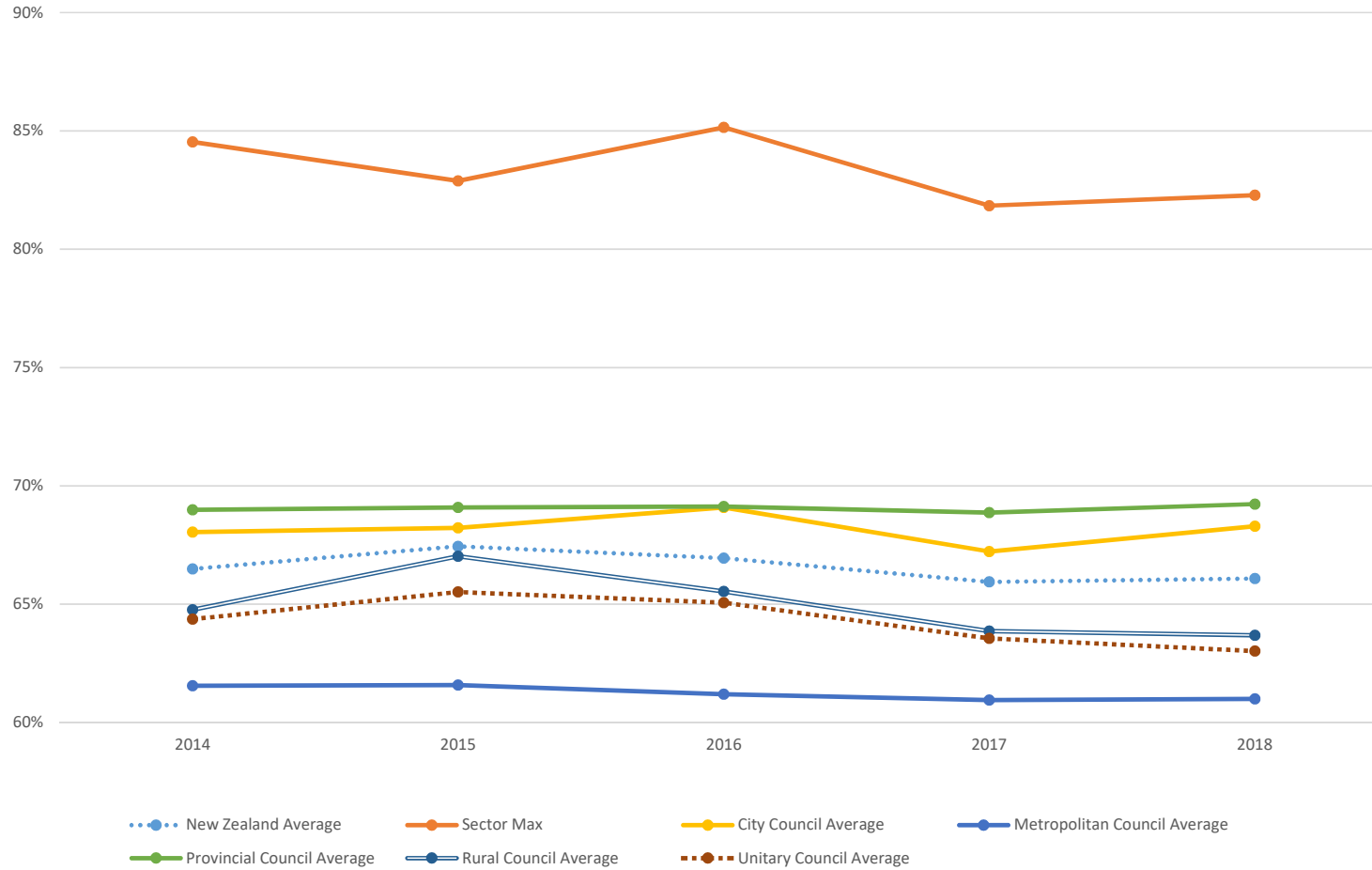


MEASURE NO: 3

**GRAPH - UPPER
- RATES MAGNIFIED VIEW
AS A PROPORTION OF
TOTAL REVENUE**



Rates as a Proportion of Total Revenue (Including Auckland) (Upper Portion Magnified)





MEASURE NO: 4

RANKED TABLE - RATES AS A PROPORTION OF TOTAL REVENUE



Rates as a Proportion of Total Revenue (Including Auckland)												
Type	Council	2014	% Change	2015	% Change	2016	% Change	2017	% Change	2018	5 Year Average	2018 % Change from Average
C	Hutt City Council	68%	-0.4%	67%	+1.4%	68%	-0.7%	68%	-0.4%	67%	68%	-0.3%
C	Invercargill City Council	60%	+1.7%	61%	-1.4%	60%	-1.7%	59%	-1.9%	58%	60%	-2.8%
C	Napier City Council	56%	-1.8%	55%	+0.2%	55%	-7.1%	51%	+8.1%	56%	55%	+1.5%
C	Palmerston North City Council	74%	+0.2%	74%	+2.0%	75%	-1.6%	74%	-1.2%	73%	74%	-1.1%
C	Porirua City Council	74%	+0.5%	75%	+0.1%	75%	-1.6%	73%	+0.8%	74%	74%	-0.2%
C	Upper Hutt City Council	77%	+1.1%	78%	+4.4%	81%	-4.2%	78%	+5.0%	81%	79%	+3.3%
City Average		68%	+0.3%	68%	+1.3%	69%	-2.7%	67%	+1.6%	68%	68%	+0.2%
M	Christchurch City Council	56%	+4.5%	58%	-19.2%	47%	+5.6%	50%	+1.8%	51%	52%	-3.2%
M	Dunedin City Council	58%	+2.4%	60%	+7.0%	64%	-1.6%	63%	-3.3%	61%	61%	-0.5%
M	Hamilton City Council	71%	-5.1%	67%	+4.7%	70%	-1.9%	69%	+0.6%	70%	69%	+0.1%
M	Tauranga City Council	62%	+3.0%	64%	+0.8%	65%	+0.5%	65%	-0.2%	65%	64%	+1.0%
M	Wellington City Council	61%	-3.4%	59%	+2.4%	60%	-3.2%	58%	+2.1%	59%	59%	-0.1%
Metropolitan Average		62%	+0.0%	62%	-0.6%	61%	-0.4%	61%	+0.1%	61%	61%	-0.4%
P	Ashburton District Council	57%	+4.8%	59%	-0.2%	59%	-6.3%	55%	+12.2%	62%	59%	+6.3%
P	Far North District Council	71%	-3.7%	69%	+9.9%	76%	-2.9%	73%	+1.7%	75%	73%	+2.6%
P	Hastings District Council	71%	+0.1%	71%	+0.1%	71%	-4.8%	67%	+2.9%	69%	70%	-0.6%
P	Horowhenua District Council	70%	+4.8%	73%	-0.5%	73%	+0.2%	73%	+4.8%	77%	73%	+4.6%
P	Kaipara District Council	67%	-1.7%	66%	-10.5%	59%	+15.1%	68%	-2.6%	66%	65%	+1.4%
P	Kapiti Coast District Council	81%	+1.8%	82%	+1.1%	83%	-1.6%	82%	-0.5%	81%	82%	-0.6%
P	Manawatu District Council	68%	+0.6%	69%	+3.2%	71%	+0.3%	71%	-0.6%	71%	70%	+1.1%
P	Masterton District Council	72%	-0.1%	72%	-0.7%	71%	+0.9%	72%	-2.4%	70%	72%	-1.6%
P	Matamata-Piako District Council	72%	+0.9%	73%	-0.1%	72%	+4.8%	76%	+0.3%	76%	74%	+3.2%
P	New Plymouth District Council	62%	+0.3%	62%	+0.7%	63%	-17.2%	52%	+23.4%	64%	61%	+5.7%
P	Queenstown Lakes District Council	67%	-7.1%	62%	-2.4%	60%	-7.8%	56%	-0.4%	55%	60%	-7.6%
P	Rotorua District Council	69%	+2.1%	71%	+0.5%	71%	+4.4%	74%	+6.3%	79%	73%	+8.3%
P	Selwyn District Council	56%	-3.6%	54%	+2.6%	55%	+7.2%	59%	+0.2%	59%	57%	+4.6%
P	South Taranaki District Council	62%	-1.1%	62%	-2.0%	60%	-4.8%	57%	-6.2%	54%	59%	-8.9%
P	South Waikato District Council	76%	+2.8%	78%	-5.4%	74%	+3.2%	76%	-5.6%	72%	75%	-4.4%
P	Southland District Council	70%	+1.3%	70%	-2.1%	69%	-2.9%	67%	-1.2%	66%	68%	-3.3%
P	Taupo District Council	77%	-2.1%	75%	+1.4%	76%	-0.2%	76%	-4.5%	72%	75%	-3.6%
P	Thames-Coromandel District Council	81%	-0.3%	81%	-3.9%	78%	-2.4%	76%	+0.1%	76%	79%	-3.1%
P	Timaru District Council	57%	-1.6%	56%	+1.0%	57%	-0.3%	57%	-1.1%	56%	57%	-1.0%
P	Waikato District Council	76%	+1.2%	77%	+0.8%	77%	-1.3%	76%	-5.5%	72%	75%	-4.7%
P	Waimakariri District Council	64%	+5.6%	68%	-0.7%	67%	+4.6%	70%	+2.3%	72%	68%	+5.4%
P	Waipa District Council	72%	-0.4%	71%	-2.5%	70%	+4.4%	73%	-1.8%	71%	71%	+0.0%
P	Waitaki District Council	69%	+2.6%	70%	-2.8%	69%	+4.2%	71%	-5.6%	67%	69%	-2.7%
P	Western Bay of Plenty District Council	79%	+1.8%	81%	-2.4%	79%	+0.3%	79%	+2.1%	80%	80%	+1.2%
P	Whakatane District Council	69%	-1.0%	68%	+8.0%	73%	-12.3%	64%	+4.5%	67%	68%	-1.5%
P	Whanganui District Council	69%	+2.6%	71%	+0.3%	71%	+6.5%	76%	-3.2%	73%	72%	+1.8%
P	Whangarei District Council	61%	-8.5%	55%	+12.1%	62%	-0.9%	62%	+3.6%	64%	61%	+5.0%
Provincial Average		69%	+0.1%	69%	+0.1%	69%	-0.4%	69%	+0.5%	69%	69%	+0.2%



Rates as a Proportion of Total Revenue (Including Auckland)												
Type	Council	2014	% Change	2015	% Change	2016	% Change	2017	% Change	2018	5 Year Average	2018 % Change from Average
R	Buller District Council	61%	-1.8%	60%	+5.9%	63%	-6.7%	59%	+8.6%	64%	62%	+4.4%
R	Carterton District Council	67%	+2.9%	69%	+8.9%	75%	+1.0%	76%	+0.6%	76%	72%	+5.1%
R	Central Hawkes Bay District Council	62%	+20.7%	75%	-0.4%	75%	-0.9%	74%	-3.3%	72%	72%	+0.2%
R	Central Otago District Council	75%	+1.1%	76%	-0.9%	75%	-6.8%	70%	+0.2%	70%	73%	-4.2%
R	Chatham Islands Council	10%	+0.4%	10%	-5.0%	9%	-10.0%	8%	+11.5%	9%	9%	+0.3%
R	Clutha District Council	77%	-0.4%	77%	-0.9%	76%	-7.9%	70%	+7.4%	75%	75%	+0.3%
R	Gore District Council	75%	-1.2%	74%	+0.9%	75%	+0.0%	75%	-0.5%	74%	75%	-0.3%
R	Grey District Council	62%	+7.3%	66%	+1.5%	67%	+3.0%	69%	+5.4%	73%	67%	+8.1%
R	Hauraki District Council	85%	-6.1%	79%	+7.2%	85%	-3.9%	82%	-2.3%	80%	82%	-2.7%
R	Hurunui District Council	40%	+19.4%	48%	-8.5%	44%	-38.7%	27%	+4.3%	28%	37%	-25.0%
R	Kaikoura District Council	65%	+1.4%	66%	+1.6%	67%	-38.9%	41%	+6.0%	44%	57%	-23.2%
R	Kawerau District Council	82%	+1.2%	83%	+0.6%	83%	-2.6%	81%	+1.3%	82%	82%	-0.1%
R	Mackenzie District Council	59%	+14.6%	67%	-26.3%	49%	+7.1%	53%	+11.9%	59%	57%	+3.1%
R	Opotiki District Council	75%	-11.9%	66%	+19.9%	79%	-6.5%	74%	-1.5%	73%	73%	-0.7%
R	Otorohanga District Council	73%	-0.0%	73%	-4.3%	70%	+1.1%	71%	-0.9%	70%	71%	-1.8%
R	Rangitikei District Council	70%	+1.4%	71%	-9.7%	64%	-1.2%	63%	+1.3%	64%	66%	-3.6%
R	Ruapehu District Council	68%	+7.7%	73%	-10.8%	65%	+7.0%	70%	-0.8%	69%	69%	+0.2%
R	South Wairarapa District Council	71%	+3.4%	74%	-1.6%	73%	+0.6%	73%	-3.3%	71%	72%	-2.3%
R	Stratford District Council	72%	-0.9%	71%	-19.3%	57%	+15.6%	66%	-2.5%	65%	66%	-2.4%
R	Tararua District Council	68%	-3.8%	66%	+1.9%	67%	+4.7%	70%	-21.4%	55%	65%	-15.5%
R	Waimate District Council	75%	+4.6%	78%	-15.4%	66%	+1.8%	67%	-1.5%	66%	70%	-6.0%
R	Wairoa District Council	55%	-3.0%	54%	+23.7%	66%	-6.7%	62%	-3.2%	60%	59%	+0.8%
R	Waitomo District Council	68%	-1.6%	67%	+2.5%	68%	+4.8%	72%	-3.4%	69%	69%	+0.7%
R	Westland District Council	41%	+63.0%	67%	-21.4%	53%	+13.4%	60%	+0.0%	60%	56%	+6.6%
	Rural Average	65%	+3.5%	67%	-2.2%	66%	-2.5%	64%	-0.3%	64%	65%	-2.0%
U	Auckland Council	71%	+0.2%	71%	+4.8%	74%	+1.5%	75%	-1.1%	74%	73%	+1.9%
U	Gisborne District Council	68%	+0.8%	68%	+1.4%	69%	-3.5%	67%	+2.5%	69%	68%	+0.5%
U	Marlborough District Council	57%	+0.9%	58%	-1.7%	57%	+2.9%	58%	-0.6%	58%	58%	+0.8%
U	Nelson City Council	66%	+2.3%	68%	-7.6%	63%	-4.0%	60%	-2.0%	59%	63%	-6.7%
U	Tasman District Council	60%	+5.0%	63%	-0.8%	62%	-8.5%	57%	-3.5%	55%	59%	-7.4%
	Unitary Average	64%	+1.8%	66%	-0.7%	65%	-2.3%	64%	-0.9%	63%	64%	-2.0%
	Grand Total (Sector) Average	66%	+1.4%	67%	-0.7%	67%	-1.5%	66%	+0.2%	66%	67%	-0.7%

All figures taken from StatsNZ



MEASURE NO: 5

STATS TABLE

- RATES AS A PROPORTION OF TOTAL REVENUE



Rates as a Proportion of Total Revenue (Including Auckland)								
Year	New Zealand Average	Sector Max	Sector Min	City Council Average	Metropolitan Council Average	Provincial Council Average	Rural Council Average	Unitary Council Average
2014	66%	85%	10%	68%	62%	69%	65%	64%
2015	67%	83%	10%	68%	62%	69%	67%	66%
2016	67%	85%	9%	69%	61%	69%	66%	65%
2017	66%	82%	8%	67%	61%	69%	64%	64%
2018	66%	82%	9%	68%	61%	69%	64%	63%

All figures taken from StatsNZ